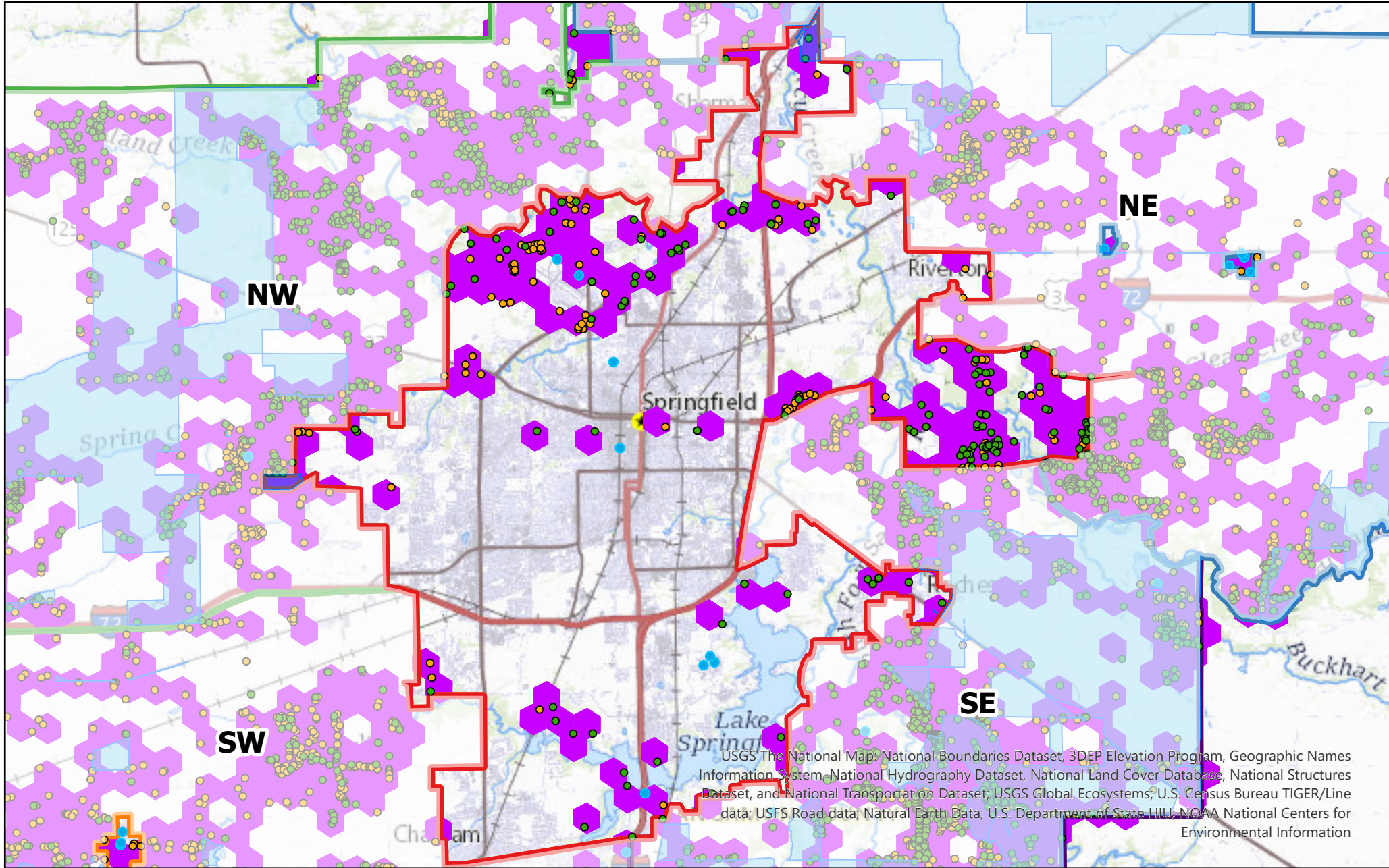


Sangamon County IL Central Section BEAD Eligible Area



Scale: 1:222,000



USGS The National Map: National Boundaries Dataset, 3DEP Elevation Program, Geographic Names Information System, National Hydrography Dataset, National Land Cover Database, National Structures Dataset, and National Transportation Dataset; USGS Global Ecosystems; U.S. Census Bureau TIGER/Line data; USFS Road data; Natural Earth Data; U.S. Department of State HII; NOAA National Centers for Environmental Information

Eligible CAIs CIL Sangamon	Underserved BEAD Eligible	Serving Areas CEN	NW	RDOF Authorized AMG Technology Investment Group, LLC
Unserved BEAD Eligible	BEAD eligible Derived from CIL Locations	Serving Areas NE	SE	
			SW	

BEAD Eligible Areas Derived from locations acquired from <https://dceo.illinois.gov/connectillinois/bead.html> 02/10/24, Map includes Authorized RDOF 904 areas.

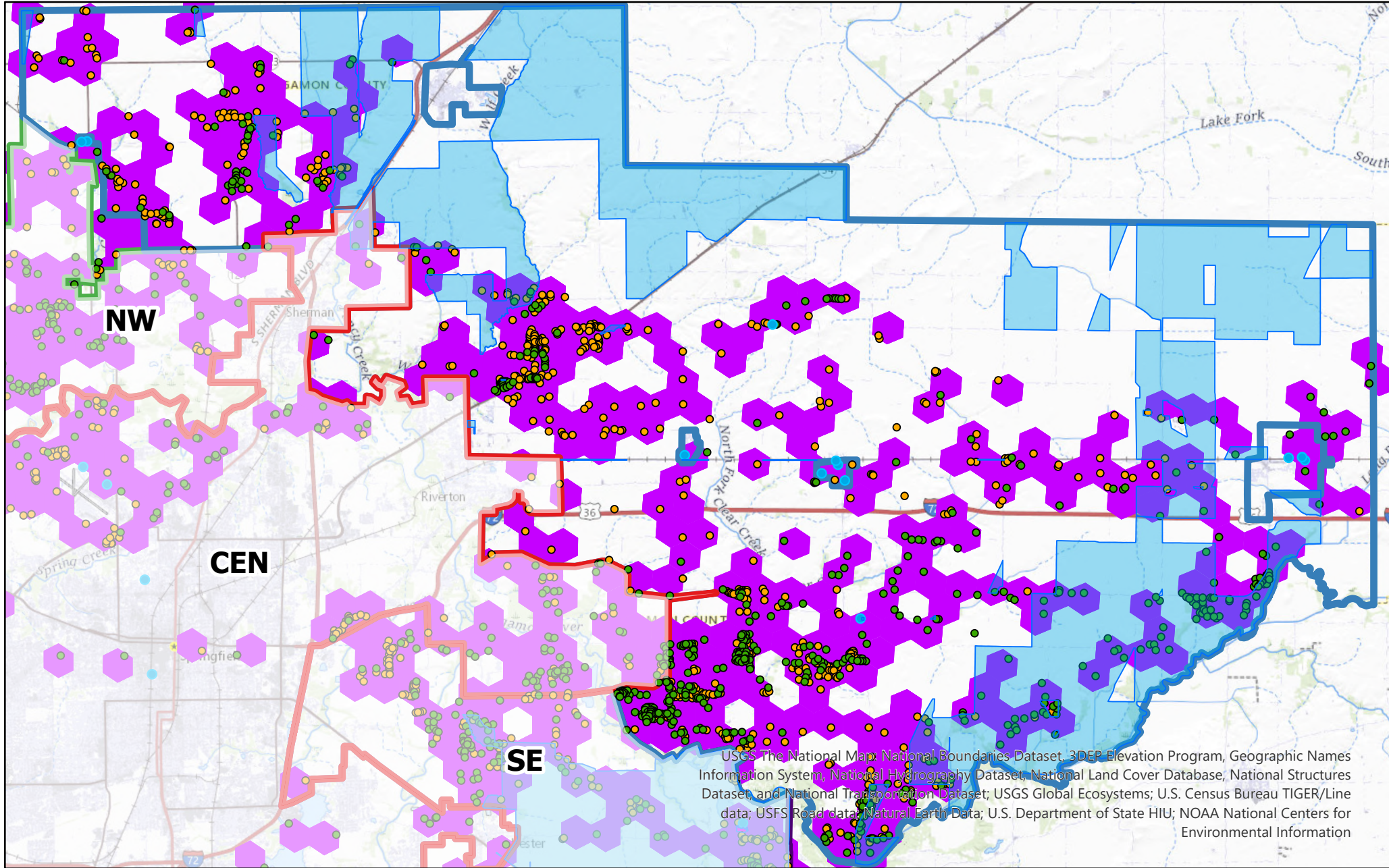
Page 1 of 5

00.51 2 3 4 Miles

Sangamon County IL Northeast Section BEAD Eligible Area



Scale: 1:202,000



USGS The National Map: National Boundaries Dataset, 3DEP Elevation Program, Geographic Names Information System, National Hydrography Dataset, National Land Cover Database, National Structures Dataset, and National Transportation Dataset; USGS Global Ecosystems; U.S. Census Bureau TIGER/Line data; USFS Road data; Natural Earth Data; U.S. Department of State HIU; NOAA National Centers for Environmental Information

Eligible CAIs CIL Sangamon	Underserved BEAD Eligible	Serving Areas CEN	NW	RDOF Authorized AMG Technology Investment Group, LLC
Unserved BEAD Eligible	BEAD eligible Derived from CIL Locations	NE	SE	
			SW	

BEAD Eligible Areas Derived from locations acquired from <https://dceo.illinois.gov/connectillinois/bead.html> 02/10/24, Map includes Authorized RDOF 904 areas.

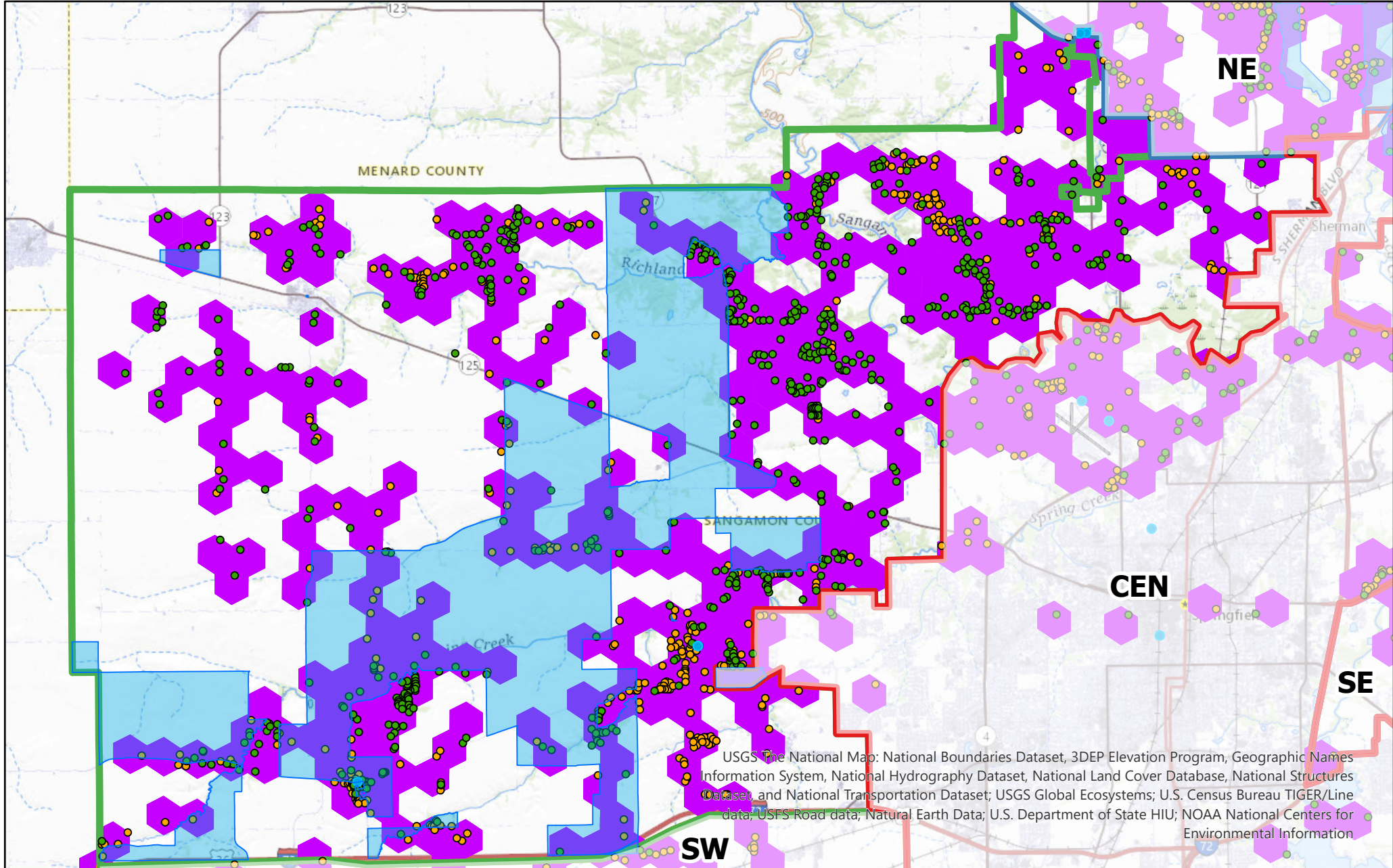
Page 3 of 5

0 0.5 1 2 3 4 Miles

Sangamon County IL Northwest Section BEAD Eligible Area



Scale: 1:179,000



USGS The National Map: National Boundaries Dataset, 3DEP Elevation Program, Geographic Names Information System, National Hydrography Dataset, National Land Cover Database, National Structures Dataset, and National Transportation Dataset; USGS Global Ecosystems; U.S. Census Bureau TIGER/Line data; USFS Road data; Natural Earth Data; U.S. Department of State HIU; NOAA National Centers for Environmental Information

Eligible CAIs CIL Sangamon	Underserved BEAD Eligible	Serving Areas	NW	RDOF Authorized
Unserved BEAD Eligible	BEAD eligible Derived from CIL Locations	CEN	SE	AMG Technology Investment Group, LLC
		NE	SW	

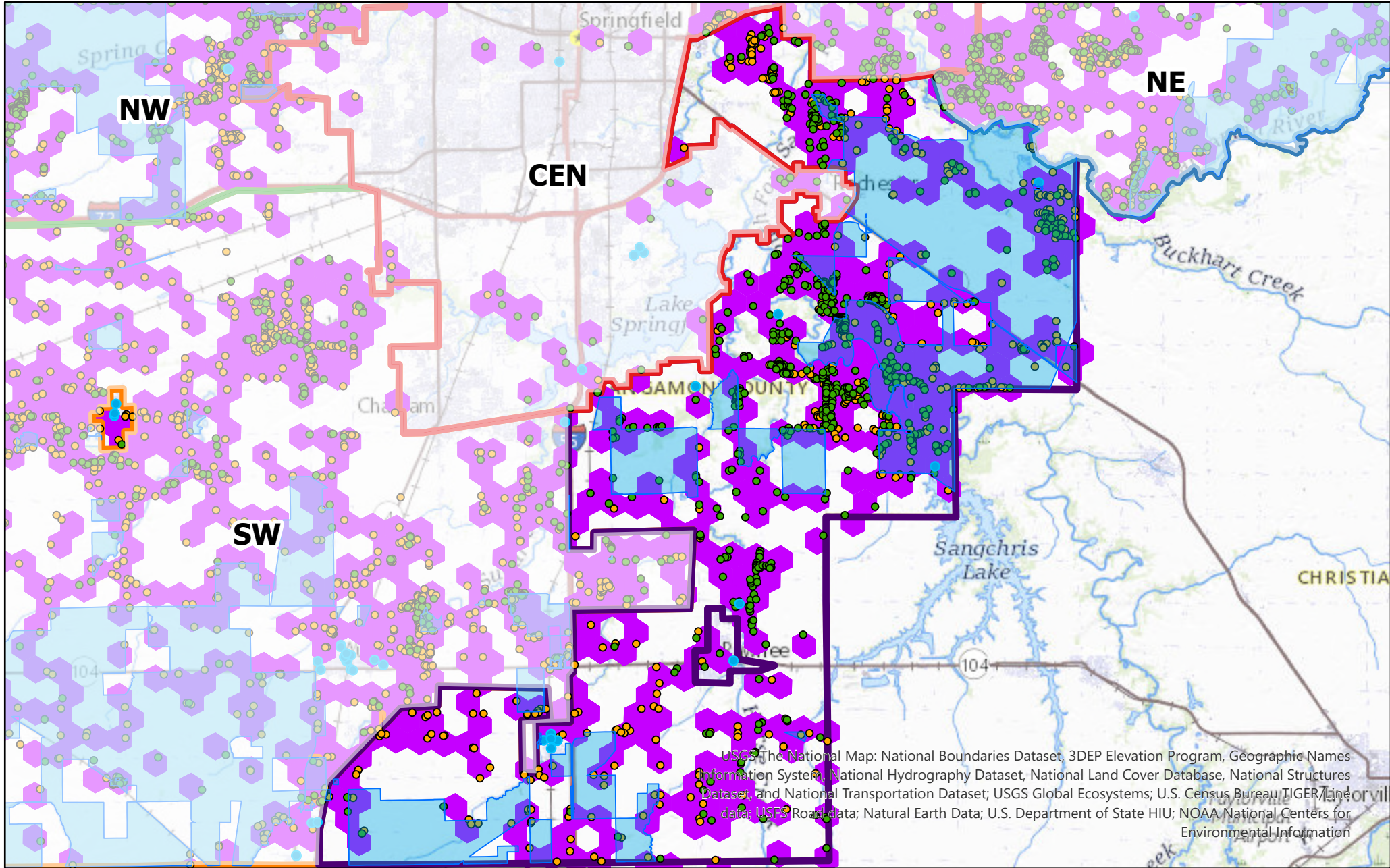
BEAD Eligible Areas Derived from locations acquired from <https://dceo.illinois.gov/connectillinois/beat.html> 02/10/24, Map includes Authorized RDOF 904 areas.

Page 2 of 5

Sangamon County IL Southeast Section BEAD Eligible Area



Scale: 1:249,000



USGS The National Map: National Boundaries Dataset, 3DEP Elevation Program, Geographic Names Information System, National Hydrography Dataset, National Land Cover Database, National Structures Dataset, and National Transportation Dataset; USGS Global Ecosystems; U.S. Census Bureau TIGER/Line data; USFS Road data; Natural Earth Data; U.S. Department of State HIU; NOAA National Centers for Environmental Information

Eligible CAIs CIL Sangamon	Underserved BEAD Eligible	Serving Areas CEN	NW	RDOF Authorized AMG Technology Investment Group, LLC
Unserved BEAD Eligible	BEAD eligible Derived from CIL Locations	Serving Areas NE	SE	
			SW	

BEAD Eligible Areas Derived from locations acquired from <https://dceo.illinois.gov/connectillinois/bead.html> 02/10/24, Map includes Authorized RDOF 904 areas.

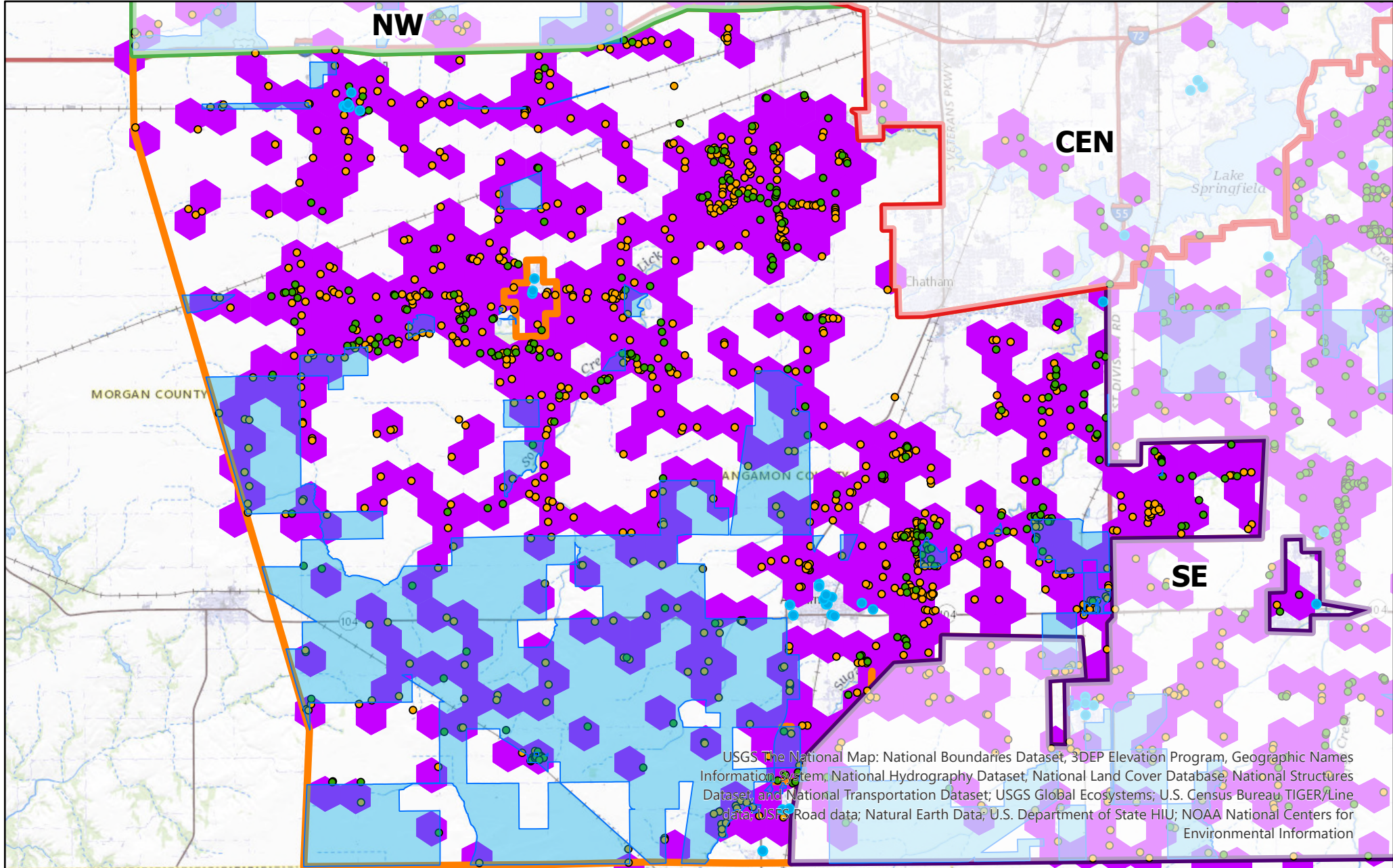
Page 4 of 5

00.75 1.5 3 4.5 6 Miles

Sangamon County IL Southwest Section BEAD Eligible Area



Scale: 1:197,000



USGS The National Map: National Boundaries Dataset, 3DEP Elevation Program, Geographic Names Information System, National Hydrography Dataset, National Land Cover Database, National Structures Dataset, and National Transportation Dataset; USGS Global Ecosystems; U.S. Census Bureau TIGER/Line data; USGS Road data; Natural Earth Data; U.S. Department of State HIU; NOAA National Centers for Environmental Information

Eligible CAIs CIL Sangamon	Underserved BEAD Eligible	Serving Areas CEN	NW	RDOF Authorized AMG Technology Investment Group, LLC
Unserved BEAD Eligible	BEAD eligible Derived from CIL Locations	NE	SE	
			SW	

BEAD Eligible Areas Derived from locations acquired from <https://dceo.illinois.gov/connectillinois/bead.html> 02/10/24, Map includes Authorized RDOF 904 areas.

Page 5 of 5

0 0.5 1 2 3 4 Miles